

PRODUCTS FOR THE ELECTRONIC INDUSTRY



ESD Equipments for Production Line  
ESD Consumable Products  
SMT Nozzle  
AI Spare Parts



# Content

|                                 |    |
|---------------------------------|----|
| ESD PACKING MATERIAL.....       | 1  |
| PP CORRUGATED SHEET.....        | 7  |
| ESD CONTAINER, TRAY.....        | 8  |
| SMT PCB MAGAZINE RACK.....      | 10 |
| ESD WIRE SHELF AND TROLLEY..... | 15 |
| ESD PCB TROLLEY, CART.....      | 18 |
| ESD CHAIR.....                  | 19 |
| WORK BENCH.....                 | 23 |
| MOISTURE-PROOF CABINET.....     | 24 |
| FLOOR MAT, TABLE MAT.....       | 25 |
| ESD FLOOR.....                  | 28 |
| CLEANROOM PRODUCT .....         | 29 |
| ESD TOOLS.....                  | 35 |



## SM-7011 Anti-static Shielding Bag

The normal film structure has 4 layers, from outside to inside as ESD Ployester, Metallized layer, Ployester, ESD Ployethylene.

Surface resistance :  $10^8$ - $10^{10}$ ohm.

Provide excellent protection for static sensitive products like: circuit boards, precision parts and accessories, electronic components, etc.

Any size can be ordered in open flat, zip-lock, and tridimensional styles, any bag for large machines can be customized.

### Technical Parameter

| Number | Properties                          | Unit  | Typical Value   |
|--------|-------------------------------------|---|---|
| 1      | Metallized Layer resistance         | Ohm/sq  | <100  |
| 2      | Metallized Layer Light transmission |   | 40%-0.4   |
| 3      | Surface resistivity                 | Ohm/sq  | < $10^{11}$   |
| 4      | Static Decay                        | 5000-0V   | <0.05s  |
| 5      | Friction Static                     | EIA541 Appendix C avg   | Triboelectric Nsnocouiombs Quartz<br>< $13n^{\circ} /in^2$ Tefion< $1313 n^{\circ} /in^2$ |
| 6      | Capacitance probe                   | EIA-541   | <10V  |
| 7      | Anti-erosion                        |   | FTMS 101Method 3005   |
| 8      | Tensile strength                    | Lbs./in   | >18   |
| 9      | Tear initiation                     | Lbs./in   | >2.5  |
| 10     | Puncture resistance                 | p.s.l   | >100  |
| 11     | Seam strength                       | Lbs./in   | 8   |
| 12     | MVTR barrier                        | gm/100in-2/24hrs  | <0.2  |
| 13     | Oxygen barrier                      | cc/100in-2/24hrs  | <0.5  |
| 14     | Heat sealing temperature            | F   | 250-375   |
| 15     | Heat sealing time                   | S   | 0.5-3.5   |
| 16     | Heat sealing pressure               | p.s.l   | 70  |
| 17     | Externals                           | No stratification, wrinkles, warping, rupture, adhesion, foreign body, the bubble outside of sealing line $\Phi \leq 3mm$ |   |

# ESD PACKING MATERIAL



## SM-7012 Moisture-barrier Bag

The normal film structure has 4 layers, from outside to inside as ESD Polyester, Aluminum foil, Intensified nylon, ESD Polyethylene. It has three main functions as resistance of static, resistance of electromagnetic interference and moisture proof. The product has superior puncture resistance and anti-static inner and outer layers with a surface resistance of  $10^8$ - $10^{10}$ ohm.

Any size can be ordered in open flat, ziplock, and tridimensional styles, any bag for large machines can be customized.

### Technical Parameter

| Number | Electrical Properties        | Standards                                   | Typical Value        |
|--------|------------------------------|---|----------------------|
| 1      | Puncture Strength            | FTMS 101C, Method 2065.1                    | $\geq 22$ pounds     |
| 2      | Vapor transmission rate      | (ASTM F-1249@100°F/100sq in/24hrs)          | $\leq 0.0003$ gms    |
| 3      | Tensile Strength             | ASTM D882-91, Method A                      | 6000 PSI             |
| 4      | Tear Initiation              | ASTM D 1004-66 Notched                      | $\geq 3$ pounds      |
| 5      | Shielding performance        | Mil-PRF-81705, EIA 541<br>or EOS/ESD S11.31 | < 30 V<br>Or < 10 nJ |
| 6      | Shielding voltage            | EIA541                                      | <30V                 |
| 7      | Interior surface resistivity | ASTM D-257                                  | < $10^{11}$ Ω        |
| 8      | Exterior surface resistivity | ASTM D-257                                  | < $10^{11}$ Ω        |
| 9      | Metalized Layer resistivity  | ASTM D-257                                  | <0.1Ω                |
| 10     | Decay time                   | Mil-PRF-81705,<br>FTMS 101 MTH 4046         | <0.05s               |
| 11     | Heat sealing temperature     |   | 150°C - 200°C        |
| 12     | Heat sealing pressure        |   | 30 - 70 PSI          |
| 13     | Heat sealing time            |   | 0.6-4.5s             |



## ESD PACKING MATERIAL



### SM-7013 Nylon Vacuum Bag

It is made of NY/CPE or PET/NY/CPE. The product has good anti-static performance, and it can be well vacuumed. It has high transparency, low oxygenation rate, good moisture-proof performance and strong puncture strength. It is also easy to heat sealing, and it's hard to aging.

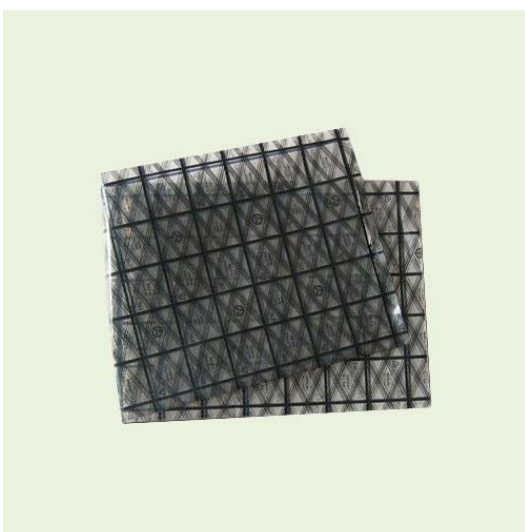
Any size can be ordered in open flat, ziplock, and tridimensional styles, any bag for large machines can be customized.



### SM-7014 ESD PE Bag

ESD PE bag is made by blow molding the mixture of low-density polyethylene (LDPE) + linear low density polyethylene (LLDPR) + antistatic Masterbatch + Color Masterbatch + stabilizing agent, then cutting off and heat sealing. The product features are stable anti-static performance, soft touch feeling, free adjustment of color and thickness, and it is widely used in the printed circuit boards and other electronic products.

Any size can be ordered in open flat, ziplock, and tridimensional styles, any bag for large machines can be customized.



### SM-7015 Conductive Grid Bag

Conductive grid bad is made from anti-static transparent plastic membrane coupled with conductive black printing ink. The surface resistance is below  $10^6 \Omega$ .

Any size can be ordered in open flat, ziplock, and tridimensional styles, any bag for large machines can be customized.



## SM-7016 Conductive Black PE Bag

Conductive PE bag is made by blow molding of mixture of LDPE, anti-cavitation agent and super conductive carbon black. It can protect electric components from electromagnetic and electrostatic damage. The surface resistance is below  $10^6 \Omega$ .

Scope of application: Electronic, military, aviation, network communications, photographic equipment, instruments, meters and other equipments.



## SM-7017 ESD Bubble Bag

Anti-static bubble bag is used for light products and low-demand packaging. It is a mature packaging materials. The air bubbles can prevent products from damage due to collision, friction or electrostatic. Surface resistance values :  $10^8$ - $10^{10} \Omega$ .

Materials, specifications and colors can be customized.



## SM-7018 ESD EPE Foam

It is used for light products and low-demand packing. It's a mature packaging material for reducing shock.

The surface resistance is  $10^8$ - $10^{10} \Omega$ .

Materials, specifications and colors can be customized.



## SM-7019 Conductive High density Foam

It is produced by compounding the PE resin with conductive fillers & blowing agents to extrude certain sheets, then cross-linking and foaming. Sheet being molded, the conductive filler forms conductive channel / network internally, so as to achieve the purpose of static leakage.



**SM-7021 Warning Tape**



**SM-7023 Sticky Floor Tape**



**SM-7024 ESD Grid Tape**



**SM-7025 ESD Transparent Tape**



**SM-7026A Warning Label**



**SM-7026B Warning Label**



**SM-7027A Kapton Tape**



**SM-7027B ESD Kapton Tape**

# ESD PACKING MATERIAL

## Blister packaging

|  |               |   |
|--|---------------|---|
| Material   |               | PVC, PP, PS, PE, HIPS and so on   |
| Mold type  | Gypsum mold   | The surface is not smooth and fragile, not durable. It is often used for design proofing.   |
|  | Copper mold   | The surface smooth and durable, low cost advantages, electroplating copper is the most commonly used mold.  |
|  | Aluminum mold | CNC machined Aluminum mold. It is the perfect precision, smooth and durable, but also high cost. Aluminum mold is for high precision demand products, or for mass production. |
| Used for electric components, food, hardware, toy and so on. |               |   |

Sample Products:





# PP CORRUGATED SHEET

---

## PP CORRUGATED SHEET

SHEET THICKNESS: 2mm, 3mm, 4mm, 5mm

COLOR: Black, grey, green, blue, white, red  
only black color can be conductive.

SURFACE RESISTANCE:

Anti-static: 10E6-10E11 ohm

Conductive: 10E4-10E6 ohm

ADVANTAGE: Any size can be ordered.

We could customize any design as request.



**PP Corrugated Sheet**



**Corrugated Divider**

## FLEXIBLE, ECONOMIC



**LN3301 Conductive  
Corrugated Box**



**LN3302 ESD  
Corrugated Box**



**LN3303A Normal  
Corrugated Box**



**LN3303B Normal  
Corrugated Box**



**Corrugated Box  
with cover**



**Conductive  
Corrugated Divider**



**Conductive  
Plastic Corner**



**Plastic Side Frame**



**Metal Handle**

# ESD CONTAINER, TRAY

## ESD CONTAINER, TRAY

### DESCRIPTION:

- 1) Molding Injection
- 2) Material: PP compound
- 3) Usage: to store electronics components, PCBs, and transportation
- 4) Surface resistance: below 10E6 ohms
- 5) ESD corrugated divider can be matched inside.
- 6) Corrugated cover or molded cover is available to prevent dust.
- 7) It can print LOGO, make stack.

We offer many models to accommodate all your needs.

| ESD BIN BOX  |              |              |          |              |              |
|--------------|--------------|--------------|----------|--------------|--------------|
| Model        | Ext.dim.(mm) | Int.dim.(mm) | Model    | Ext.dim.(mm) | Int.dim.(mm) |
| SM-2101      | 155×100×55   | 135×85×50    | SM-2103  | 255×175×75   | 220×160×70   |
| SM-2102      | 205×135×65   | 180×120×60   | SM-2104  | 300×205×90   | 270×185×80   |
| ESD TOTE BOX |              |              |          |              |              |
| Model        | Ext.dim.(mm) | Int.dim.(mm) | Model    | Ext.dim.(mm) | Int.dim.(mm) |
| SM-2105      | 360×270×135  | 320×240×125  | SM-2125  | 600×500×167  | 560×460×160  |
| SM-2106      | 380×240×105  | 340×220×90   | *SM-2127 | 580×370×200  | 535×344×193  |
| SM-2107      | 420×310×155  | 380×280×145  | *SM-2128 | 580×370×160  | 535×344×152  |
| *SM-2109     | 500×360×175  | 440×330×165  | *SM-2129 | 615×425×155  | 585×390×145  |
| *SM-2110     | 565×420×240  | 510×390×235  | *SM-2130 | 628×425×320  | 580×385×310  |
| *SM-2111     | 565×420×300  | 510×390×290  | SM-2131  | 720×450×180  | 680×420×175  |
| *SM-2112     | 600×500×150  | 560×455×140  | SM-2132  | 720×560×380  | 675×515×370  |
| *SM-2113     | 600×500×300  | 560×455×290  | SM-2136  | 560×430×145  | 515×350×140  |
| *SM-2114     | 610×500×360  | 560×460×355  | SM-2137  | 585×405×175  | 538×360×170  |
| SM-2115      | 670×410×160  | 620×370×150  | SM-2138  | 530×370×205  | 490×330×200  |
| *SM-2116     | 565×420×380  | 510×390×375  | *SM-2139 | 620×430×200  | 580×385×195  |
| *SM-2119     | 610×500×400  | 560×455×395  | *SM-2149 | 620×430×250  | 580×395×243  |
| *SM-2120     | 610×415×245  | 580×380×240  | SM-2150  | 510×345×185  | 464×300×175  |

| CONDUCTIVE TRAY |              |              |         |              |              |
|-----------------|--------------|--------------|---------|--------------|--------------|
| Model           | Ext.dim.(mm) | Int.dim.(mm) | Model   | Ext.dim.(mm) | Int.dim.(mm) |
| SM-2108         | 450×300×60   | 430×280×50   | SM-2126 | 315×230×43   | 300×215×37   |
| SM-2108A        | 450×300×45   | 430×280×38   | SM-2133 | 480×328×42   | 445×292×35   |
| SM-2118         | 440×290×50   | 400×265×45   | SM-2135 | 615×420×95   | 570×370×90   |
| SM-2121         | 375×250×65   | 345×225×60   | SM-2140 | 226×166×29   | 214×154×25   |
| SM-2122         | 440×295×80   | 410×265×75   | SM-2141 | 289×195×26   | 274×183×23   |
| SM-2123         | 560×375×75   | 525×330×70   | SM-2142 | 315×290×29   | 136×58×20    |

| Cover (Lid) |            |
|-------------|------------|
| Model       | Size(mm)   |
| SM-2168     | 610×505×15 |
| SM-2169     | 566×427×15 |
| SM-2170     | 585×375×30 |
| SM-2171     | 630×437×16 |
| SM-2172     | 484×357×14 |



SM-2127 ESD Tote Box



ESD Bin Box



SM-2114 ESD Tote Box



SM-2136 ESD Tote Box



SM-2113 ESD Tote Box

Notes: \* cover is available.

## ESD Circulation Box

| Model   | Ext.dim.(mm) | Int.dim.(mm) | Model   | Ext.dim.(mm) | Int.dim.(mm) |
|---------|--------------|--------------|---------|--------------|--------------|
| SM-6409 | 600x400x90   | 563x365x80   | SM-6422 | 600x400x230  | 563x365x220  |
| SM-6411 | 600x400x110  | 563x365x105  | SM-6425 | 600x400x255  | 563x365x235  |
| SM-6413 | 600x400x135  | 563x365x125  | SM-6429 | 600x400x290  | 563x365x280  |
| SM-6415 | 600x400x150  | 563x365x135  | SM-6433 | 600x400x330  | 563x365x320  |
| SM-6417 | 600x400x175  | 563x365x160  | -       | -            | -            |



SM-6422

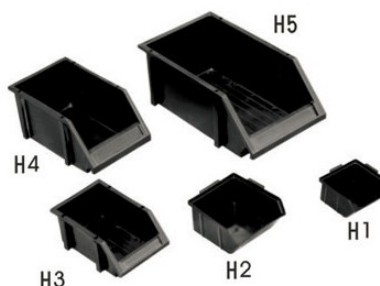
Notes: cover is available

## ESD Component Box

| Model | Contour Size  | Inner Size    | Type          |
|-------|---------------|---------------|---------------|
| No.1  | 95x105x50mm   | 80x95x40mm    | Hanging-style |
| No.2  | 130x125x65mm  | 110x105x55mm  | Hanging-style |
| No.3  | 165x95x70mm   | 148x86x60mm   | Hanging-style |
| No.4  | 175x105x80mm  | 158x95x70mm   | Hanging-style |
| No.5  | 200x130x90mm  | 180x113x80mm  | Hanging-style |
| No.6  | 233x159x120mm | 215x140x112mm | Hanging-style |



| Model | Box Size      |
|-------|---------------|
| H1    | 104x104x49mm  |
| H2    | 140x122x68mm  |
| H3    | 180x121x79mm  |
| H4    | 253x155x125mm |
| H5    | 352x201x143mm |



## Group of Vertical Detail Cells

| Model | Ext.dim.(mm) | Int.dim.(mm) | Cant Height (mm) | Support Height (mm) | wgt. (kg) | Volume (L) | Load /cell(kg) | Stacking Load(kg) | Quantity of Package (cell/box) |
|-------|--------------|--------------|------------------|---------------------|-----------|------------|----------------|-------------------|--------------------------------|
| A1811 | 180x110x80   | 155x85x75    | 45               | 35                  | 0.12      | 0.5        | 3              | 30                | 80                             |
| A2515 | 250x120x125  | 220x125x120  | 65               | 35                  | 0.33      | 1.7        | 10             | 100               | 40                             |
| A3520 | 350x200x155  | 305x170x150  | 80               | 50                  | 0.65      | 3.9        | 15             | 150               | 20                             |
| A4520 | 450x200x180  | 405x165x170  | 100              | 50                  | 0.96      | 6.4        | 20             | 200               | 12                             |
| A4530 | 450x300x180  | 405x270x170  | 100              | 50                  | 1.18      | 9.8        | 25             | 250               | 8                              |

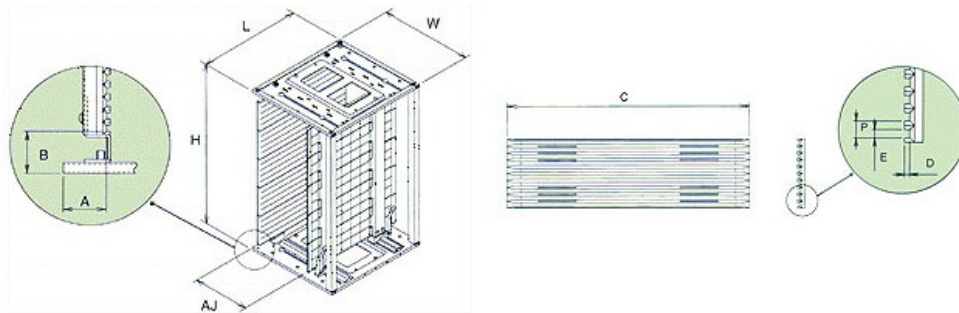


Group of Vertical Detail Cells

# SMT PCB MAGAZINE RACK

## SMT PCB MAGAZINE RACK

- Smooth-Width adjustment using our patented rack & pinion system.
  - ESD Safe plastic card guides, 50 slots.
  - Heat-resistant card guides for board temperature up to 200°C.
  - Compatible with all brands of equipment.
- \*Leenol Rack is RoHS compliance.



| Model No.    | #1 Base | #2 AJ Method  | #3 Temp. | Outer Dimension |     |     |        | Card Guide |     |   |    | Ref. |    | PCB Slots | Weight(kg) |
|--------------|---------|---------------|----------|-----------------|-----|-----|--------|------------|-----|---|----|------|----|-----------|------------|
|              |         |               |          | L               | W   | H   | AJ     | C          | D   | E | P  | A    | B  |           |            |
| SM-A801      | P       | Screw Adjust. | 80°C     | 355             | 315 | 580 | 50-250 | 353        | 3.2 | 7 | 10 | 34   | 34 | 50        | 5          |
| SM-A802      | P       | Screw Adjust. | 80°C     | 355             | 315 | 305 | 50-250 | 353        | 3.2 | 7 | 10 | 34   | 34 | 25        | 3.4        |
| SM-B803      | M       | Screw/Gear    | 80°C     | 355             | 320 | 563 | 50-255 | 353        | 3.0 | 5 | 10 | 34   | 34 | 50        | 6          |
| SM-B803HT    | M       | Screw/Gear    | 120°C    | 355             | 320 | 563 | 50-255 | 353        | 3.0 | 5 | 10 | 34   | 34 | 50        | 6          |
| SM-B083HT200 | M       | Screw/Gear    | 200°C    | 355             | 320 | 563 | 50-255 | 353        | 3.0 | 5 | 10 | 34   | 34 | 50        | 6          |
| SM-B804      | P       | Screw/Gear    | 80°C     | 355             | 320 | 563 | 50-255 | 353        | 3.0 | 5 | 10 | 34   | 34 | 50        | 4.5        |
| SM-B804HT    | P       | Screw/Gear    | 120°C    | 355             | 320 | 563 | 50-255 | 353        | 3.0 | 5 | 10 | 34   | 34 | 50        | 4.5        |
| SM-B805      | M       | Screw/Gear    | 80°C     | 355             | 320 | 563 | 50-255 | 353        | 3.0 | 5 | 10 | 34   | 34 | 50        | 7.5        |
| SM-B805HT    | M       | Screw/Gear    | 120°C    | 355             | 320 | 563 | 50-255 | 353        | 3.0 | 5 | 10 | 34   | 34 | 50        | 7.5        |
| SM-B806      | P       | Screw/Gear    | 80°C     | 355             | 320 | 563 | 50-255 | 353        | 3.0 | 5 | 10 | 34   | 34 | 50        | 6.5        |
| SM-B806HT    | P       | Screw/Gear    | 120°C    | 355             | 320 | 563 | 50-255 | 353        | 3.0 | 5 | 10 | 34   | 34 | 50        | 6.5        |
| SM-C807      | M       | Gear Track    | 80°C     | 460             | 400 | 565 | 70-330 | 460        | 4.0 | 5 | 10 | 35   | 35 | 50        | 8.8        |
| SM-C807HT    | M       | Gear Track    | 120°C    | 460             | 400 | 565 | 70-330 | 460        | 4.0 | 5 | 10 | 35   | 35 | 50        | 8.8        |
| SM-D808      | M       | Screw/Gear    | 80°C     | 535             | 460 | 570 | 50-400 | 530        | 4.0 | 7 | 10 | 34   | 41 | 50        | 10.5       |
| SM-D808HT    | M       | Screw/Gear    | 120°C    | 535             | 460 | 570 | 50-400 | 530        | 4.0 | 7 | 10 | 34   | 41 | 50        | 10.5       |
| SM-E809      | M       | Gear Track    | 80°C     | 535             | 530 | 570 | 70-460 | 530        | 4.0 | 5 | 10 | 34   | 34 | 50        | 12.3       |
| SM-E809HT    | M       | Gear Track    | 120°C    | 535             | 530 | 570 | 70-460 | 530        | 4.0 | 5 | 10 | 34   | 34 | 50        | 12.3       |
| SM-B811      | P       | Chain Track   | 80°C     | 355             | 320 | 570 | 50-250 | 353        | 4.0 | 5 | 10 | 34   | 34 | 50        | 6          |

#1: "M" designates "Metal Base". "P" designates "Plastic Base"

#2: "AJ" designates the method of adjusting the width using a screw or with gear adjust system.

## SMT PCB MAGAZINE RACK



### SM-A801 SMT MAGAZINE RACK

Surface Resistance:  $10^4 - 10^6 \Omega$   
 Contour Size (L×W×H)mm: 355×315×580  
 51pcs of Plates can be stored  
 The specification of PCB plates: 350×(80—250)mm  
 Guide slot of side plate: Depth 3mm, Width 7mm, Pitch 10mm  
 Top and bottom Base is plastic base.  
 Fix method: screw adjustable  
 Weight: 5.0KG  
 SM-A802  
 355x315x305mm size magazine rack is available



### SM-B803 SMT MAGAZINE RACK

Surface Resistance:  $10^4 - 10^6 \Omega$   
 Contour Size(L×W×H)mm: 355×320×565  
 50pcs of Plates can be stored  
 The specification of PCB plates: 350×(50—250)mm  
 Guide slot of side plate: Depth 3mm, Width 5mm, Pitch 10mm  
 Top and bottom Base is metal base.  
 Fix method: handle adjustable  
 Side plate: five pieces assembled  
 Weight: 6.0KG



### SM-B804 SMT MAGAZINE RACK

Surface Resistance:  $10^4 - 10^6 \Omega$   
 Contour Size(L×W×H)mm: 355×320×565  
 50pcs of Plates can be stored  
 The specification of PCB plates: 350×(50—250)mm  
 Guide slot of side plate: Depth 3mm, Width 5mm, Pitch 10mm  
 Top and bottom Base is plastic base.  
 Fix method: handle adjustable  
 Side plate: five pieces assembled  
 Weight: 4.5KG

## SMT PCB MAGAZINE RACK



### SM-B805 SMT MAGAZINE RACK

Surface Resistance:  $10^4 - 10^6 \Omega$

Contour Size(L×W×H)mm: 355×320×565

50pcs of Plates can be stored

The specification of PCB plates: 350×(50—250)mm

Guide slot of side plate: Depth 3mm, Width 5mm, Pitch 10mm

Top and bottom Base is metal base.

Fix method: handle adjustable

Side plate: whole plates

Weight: 7.5KG



### SM-B806 SMT MAGAZINE RACK

Surface Resistance:  $10^4 - 10^6 \Omega$

Contour Size(L×W×H)mm: 355×320×565

50pcs of Plates can be stored

The specification of PCB plates: 350×(50—250)mm

Guide slot of side plate: Depth 3mm, Width 5mm, Pitch 10mm

Top and bottom Base is plastic base.

Fix method: handle adjustable

Side plate: whole plates

Weight: 6.5KG



### SM-C807 SMT MAGAZINE RACK

Surface Resistance:  $10^4 - 10^6 \Omega$

Contour Size(L×W×H)mm: 460×400×565

50pcs of Plates can be stored

The specification of PCB plates: 460×(50—330)mm

Guide slot of side plate: Depth 3mm, Width 5mm, Pitch 10mm

Top and bottom Base is metal base.

Fix method: handle adjustable

Side plate: five pieces assembled

Weight: 8.8KG

## SMT PCB MAGAZINE RACK



### SM-D808 SMT MAGAZINE RACK

Surface Resistance:  $10^4 - 10^6 \Omega$

Contour Size(L×W×H)mm: 535×460×570

50pcs of Plates can be stored

The specification of PCB plates: 460×(50—380)mm

Guide slot of side plate: Depth 3mm, Width 7mm, Pitch 10mm

Top and bottom Base is metal base.

Fix method: handle adjustable

Side plate: five/two pieces assembled

Weight: 10.5KG



### SM-E809 SMT MAGAZINE RACK

Surface Resistance:  $10^4 - 10^6 \Omega$

Contour Size(L×W×H)mm: 535×530×570

50pcs of Plates can be stored

The specification of PCB plates: 530×(50—460)mm

Guide slot of side plate: Depth 3mm, Width 5mm, Pitch 10mm

Top and bottom Base is metal base.

Fix method: handle adjustable

Side plate: five pieces assembled

Weight: 12.3KG



### SM-B811 SMT MAGAZINE RACK

Surface Resistance:  $10^4 - 10^6 \Omega$

Contour Size(L×W×H)mm: 355×320×570

50pcs of Plates can be stored

The specification of PCB plates: 350×(50—250)mm

Guide slot of side plate: Depth 3mm, Width 5mm, Pitch 10mm

Top and bottom Base is plastic base.

Fix method: chain adjustable (Four chains can be conveyed at the same time, it is accurate and efficient to adjust, close conveniently and freely)

Side plate: whole plate

Weight: 5.6KG



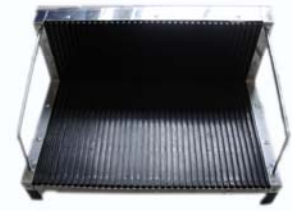
### SM-C03 Conductive Component Box

Surface Resistance:  $10^5-10^8 \Omega$   
 Contour Size: 138x93x46mm  
 Interior Size: 127x87x42mm  
 Shape: Combination, drawer type



### SM-C04 Conductive Insert-rack

Surface Resistance:  $10^5-10^8 \Omega$   
 Contour Size: 100x15x14mm  
 Width: 2.0mm  
 Can supply a variety of equipment and products for ESD production line



### SM-D01 Anti-static Circulation Rack

Contour Size: (LxWxH)  
 410x280x165mm  
 Use Slot Size: (LxH) 225x140mm  
 It can put 38pcs pcbs.



### SM-D02 Anti-static Circulation Rack

Contour Size: (LxWxH)  
 480x140x35mm  
 25 pcs of PCB plates can be stored  
 Shape: Rectangle, Two-sided may use.



### SM-D03 Anti-static Circulation Rack

Contour Size: (LxWxH)  
 265x205x95mm  
 Use Slot Size: (LxH) 155x75mm  
 25 pcs of PCB plates can be stored



### SM-D04 Anti-static Circulation Rack

Contour Size: (LxWxH)  
 410x140x22mm/410x280x22mm  
 Slot (WxH) 2.8x5mm Spacing: 10mm  
 42 pcs of PCB plates can be stored



### SM-D05 Anti-static Circulation Rack

Contour Size: (LxWxH)  
 437x160x30mm  
 Slot (WxH) 3x7mm Spacing: 16mm  
 5 pcs of PCB plates can be stored



### SM-D07 Anti-static Circulation Rack

Contour Size: (LxWxH)  
 485x175x50mm  
 Slot : 3x7mm Slot: 2.2x4mm  
 Spacing: 16mm  
 25 pcs of PCB plates can be stored



### SM-D08 Anti-static Circulation Rack

Contour Size: (LxWxH)  
 1200x1000x145mm  
 Surface Resistance:  $10^8-10^{11} \Omega$   
 Material: HDPE/PP  
 Active Carrying: 800kgs  
 Stable Carrying: 2000kgs



## ESD WIRE SHELF AND TROLLEY

### ESD WIRE SHELF AND TROLLEY

#### SM-608 ESD STORAGE

#### Raw Material

**Carbon Steel:** Q195-F#

**Stainless Steel:** 202# or 304#

#### Wire Diameter

**A:**  $\Phi 4.0\text{mm} \sim \Phi 7.0\text{mm}$ , Normal Dia.:  $\Phi 6.0\text{mm}$

**B:**  $\Phi 4.0\text{mm} \sim \Phi 7.0\text{mm}$ , Normal Dia.:  $\Phi 6.0\text{mm}$

**C:**  $\Phi 2.5\text{mm} \sim \Phi 4.7\text{mm}$ , Normal Dia.:  $\Phi 3.0\text{mm}$

**D:**  $\Phi 3.0\text{mm} \sim \Phi 6.0\text{mm}$ , Normal Dia.:  $\Phi 4.2\text{mm}$



#### Shelves Collars Type

#### Coniform Collars

**Dimension:**  $\Phi 19.1\text{mm}$ ,  $\Phi 22\text{mm}$ ,  $\Phi 25.4\text{mm}$ ,  $\Phi 38.1\text{mm}$

This high quality Chrome Wire shelving system is a tried and tested product, lending itself to endless and imaginative applications in all commercial areas, where strength, style and elegance are required.



# ESD WIRE SHELF AND TROLLEY

## DATA SHEET

| Width(mm) | Length(mm) | Chrome-plated Wire Shelves | Weight(kg) | Stainless Steel Wire Shelves | Weight(kg) |
|-----------|------------|----------------------------|------------|------------------------------|------------|
| 350       | 600        | C 1424                     | 2.7        | S 1424                       | 2.9        |
|           | 750        | C 1430                     | 3.2        | S 1430                       | 3.5        |
|           | 900        | C 1436                     | 3.6        | S 1436                       | 3.9        |
|           | 1050       | C 1442                     | 4.3        | S 1442                       | 4.7        |
|           | 1200       | C 1448                     | 4.7        | S 1448                       | 5.1        |
|           | 1500       | C 1460                     | 6.3        | S 1460                       | 6.9        |
|           | 1800       | C 1472                     | 7.7        | S 1472                       | 8.2        |
| 450       | 600        | C 1824                     | 3.2        | S 1824                       | 3.5        |
|           | 750        | C 1830                     | 3.6        | S 1830                       | 3.9        |
|           | 900        | C 1836                     | 4.3        | S 1836                       | 4.3        |
|           | 1050       | C 1842                     | 5.0        | S 1842                       | 5.5        |
|           | 1200       | C 1848                     | 5.4        | S 1848                       | 5.9        |
|           | 1500       | C 1860                     | 7.7        | S 1860                       | 8.4        |
|           | 1800       | C 1872                     | 9.1        | S 1872                       | 9.9        |
| 530       | 600        | C 2124                     | 3.6        | S 2124                       | 3.9        |
|           | 750        | C 2130                     | 4.1        | S 2130                       | 4.5        |
|           | 900        | C 2136                     | 5          | S 2136                       | 5.5        |
|           | 1050       | C 2142                     | 5.4        | S 2142                       | 5.9        |
|           | 1200       | C 2148                     | 6.4        | S 2148                       | 7          |
|           | 1500       | C 2160                     | 8.2        | S 2160                       | 8.9        |
|           | 1800       | C 2172                     | 10.9       | S 2172                       | 11.9       |
| 600       | 600        | C 2424                     | 4.1        | S 2424                       | 4.5        |
|           | 750        | C 2430                     | 5          | S 2430                       | 5.5        |
|           | 900        | C 2436                     | 5.9        | S 2436                       | 6.4        |
|           | 1050       | C 2442                     | 6.8        | S 2442                       | 7.4        |
|           | 1200       | C 2448                     | 7.3        | S 2448                       | 8          |
|           | 1500       | C 2460                     | 9.5        | S 2460                       | 10.4       |
|           | 1800       | C 2472                     | 11.8       | S 2472                       | 12.9       |
| 750       | 900        | C 3036                     | 6.8        | -                            | -          |
|           | 1200       | C 3048                     | 9.5        | -                            | -          |
|           | 1500       | C 3060                     | 11.8       | -                            | -          |
|           | 1800       | C 3072                     | 14         | -                            | -          |

## ESD WIRE SHELF AND TROLLEY

### SM-606A ESD GRADIENT TROLLEY



| Width(mm) | Length(mm) | Trolley handle Height(mm) |
|-----------|------------|---------------------------|
| 450       | 600        | 900                       |
|           | 900        | 900                       |
|           | 1050       | 900                       |
|           | 1200       | 900                       |
| 600       | 600        | 900                       |
|           | 750        | 900                       |
|           | 1050       | 900                       |
|           | 1200       | 900                       |

### SM-609 SMT REELTROLLEY



| Item        | Size(mm) | Line Space(mm) |
|-------------|----------|----------------|
| Single Peak | 450x900  | 60             |
|             | 450x1200 | 60             |
|             | 450x1500 | 60             |
| Double Peak | 450x900  | 20             |
|             | 450x1200 | 20             |
|             | 450x1500 | 20             |

### SM-610 ESD TROLLEY FOR TRAYS



IT CAN BE CUSTOMIZED ACCORDING TO CUSTOMER REQUEST.

# PCB TROLLEY, CART

## ESD PCB TROLLEY, CART



### SM-601 ESD Dolly

Dolly size: 660x480x145mm / 710x520x150mm

Max. Load: 200kg

Weight: 5.2kg

Surface resistance: 10e4-10e7 ohms



### SM-602 ESD Dolly

Any specifications can be ordered.

Max. Load: 100kg

Surface resistance: 10e4-10e7 ohms

Dolly for magazine rack, esd plastic containers



### SM-603A ESD PCB Trolley

Size: 900x550x1300mm

Each board has 100pcs slots.

Slot width: 5mm, Pitch: 10mm

Adding more double flashboards to put more PCBs

Surface resistance: below 10e6 ohm

Flashboard width: 350mm, 460mm



### SM-603B ESD PCB Trolley

Size: 900x550x1370mm

Each board has 100pcs slots.

Slot width: 5mm, Pitch: 10mm

Adding more double flashboards to put more PCBs

Surface resistance: below 10e6 ohm

Flashboard width: 350mm, 460mm



### SM-604 ESD S/S PCB Trolley

Size: 950x675x1300mm

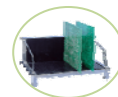
Each board has 60pcs slots. It can insert 120pcs PCBs through 2 directions. Inserting depth: 225mm

Slot width: 5mm, Pitch: 19mm, Slot depth: 5mm

Adding more double flashboards to put more PCBs

Surface resistance: below 10E6 ohm

Flashboard width: 350mm, 460mm



### SM-605 ESD Hanging Trolley

Size: 1050x540x1400mm

It can put max.24pcs L type circulation rack.

Surface resistance: 10e6-10e11ohms

L type circulation rack also supplied.

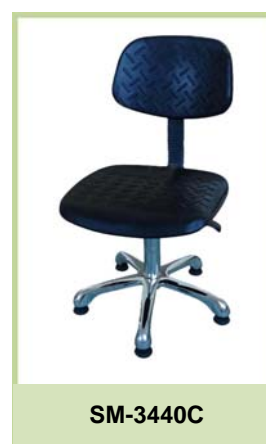
# ESD CHAIR

| Model    | Surface size                   | Adjust. Height | Five-star feet   | Chair castor                           | Chassis       | System Resistance                  | Lift Model          |
|----------|--------------------------------|----------------|--|--|---------------|------------------------------------|---------------------|
| SM-2110A | Dia.:325mm, Thickness:35-40mm  | 450-600mm      | Chrome plated, R=240mm   | High strength durable nylon castor     | Steel plating | 10 <sup>6</sup> -10 <sup>9</sup> Ω | High-class gas lift |
| SM-2120A | Dia.:325mm, Thickness:35-40mm  | 450-600mm      | Chrome plated with footrest circle, R=220mm  | High strength durable nylon castor     |               |                                    |                     |
| SM-2140C | Dia.:325mm, Thickness:35-40mm  | 450-600mm      | one-time forming plated, R=240mm   | High strength durable nylon fixed feet |               |                                    |                     |
| SM-2111A | Dia.:325mm, Thickness:35-40mm  | 650-850mm      | Chrome plated, R=240mm Footrest Circle: Stainless steel Circle, plastic cross          | High strength durable nylon castor     |               |                                    |                     |
| SM-2210C | Dia.:335mm, Thickness:35-40mm  | 420-570mm      | Chrome plated, R=240mm   | High strength durable nylon fixed feet |               |                                    |                     |
| SM-2240A | Dia.:335mm, Thickness:35-40mm  | 420-570mm      | one-time forming plated, R=240mm   | High strength durable nylon castor     |               |                                    |                     |
| SM-2250C | Dia.:335mm, Thickness:35-40mm  | 390-540mm      | Alum. Alloy Die-casting R=240mm  | High strength durable nylon fixed feet |               |                                    |                     |
| SM-2310A | Size:300x350mm, Thickness:40mm | 450-600mm      | Chrome plated, R=240mm   | High strength durable nylon castor     |               |                                    |                     |
| SM-2340C | Size:300x350mm, Thickness:40mm | 430-580mm      | one-time forming plated, R=240mm   | High strength durable nylon fixed feet |               |                                    |                     |
| SM-2351A | Size:300x350mm, Thickness:40mm | 640-840mm      | Alum. Alloy Die-casting R=240mm Footrest Circle: Stainless steel Circle, plastic cross | High strength durable nylon castor     |               |                                    |                     |



# ESD CHAIR

| Model    | Surface size  | Adjust. Height | Five-star feet  | Chair castor                                    | Chassis                               | System Resistance                  | Lift Model          |
|----------|---|----------------|---|---|---------------------------------------|------------------------------------|---------------------|
| SM-3110A | Seat Size:<br>380x380mm,<br>Back size:<br>350x250mm | 460-610mm      | Chrome plated, R=260mm  | High strength durable nylon castor              | Steel Board Plating Chassis           | 10 <sup>6</sup> -10 <sup>9</sup> Ω | High-class gas lift |
| SM-3140C |   | 430-580mm      | one-time forming plated, R=240mm  | High strength durable nylon fixed feet          |                                       |                                    |                     |
| SM-3160E |   | 420-570mm      | Alum. Alloy Die-casting, R=320mm  | Aluminum castor                                 |                                       |                                    |                     |
| SM-3250C |   | 420-580mm      | Alum. Alloy Die-casting, R=320mm  | High strength durable nylon fixed feet          | Steel Pipe Plating Chassis Connection |                                    |                     |
| SM-3261C |   | 630-830mm      | Alum. Alloy Die-casting, R=320mm<br>Footrest circle: stainless steel circle and plastic cross | High strength durable nylon fixed feet          |                                       |                                    |                     |
| SM-3340C |   | 440-590mm      | one-time forming plated, R=240mm  | High strength durable nylon fixed feet          | Steel Board Plating Chassis           |                                    |                     |
| SM-3350B |   | 460-610mm      | Alum. Alloy Die-casting, R=240mm  | High strength durable nylon double-color castor |                                       |                                    |                     |
| SM-3410A |   | 460-610mm      | Chrome plated, R=260mm  | High strength durable nylon castor              | Steel Pipe Plating Chassis Connection |                                    |                     |
| SM-3440C |   | 440-590mm      | one-time forming plated, R=240mm  | High strength durable nylon fixed feet          |                                       |                                    |                     |
| SM-3461E |   | 650-850mm      | Alum. Alloy Die-casting, R=320mm<br>Footrest circle: stainless steel circle and plastic cross | Aluminum castor                                 |                                       |                                    |                     |



# ESD CHAIR

| Model     | Surface size                               | Adjust. Height | Five-star feet   | Chair castor                                    | Chassis  | System Resistance                  | Lift Model          |
|-----------|--|----------------|--|---|--|------------------------------------|---------------------|
| SM-4220A  | Dia.:320mm, Thickness:60mm                 | 470-620mm      | Chrome plated with footrest circle, R=220mm  | High strength durable nylon castor              | Steel Plating  | 10 <sup>6</sup> -10 <sup>9</sup> Ω | High-class gas lift |
| SM-4320D  | Dia.:320mm, Thickness:60mm                 | 470-620mm      | Chrome plated with footrest circle, R=220mm  | High strength durable nylon flat feet           |  |                                    |                     |
| SM-4241C  | Dia.:320mm, Thickness:60mm                 | 590-850mm      | one-time forming plated, R=240mm<br>Footrest Circle: Stainless steel Circle, plastic cross | High strength durable nylon fixed feet          |  |                                    |                     |
| SM-5110A  | Seat Size: 430x400mm, Back size: 400x300mm | 460-620mm      | Chrome plated, R=260mm   | High strength durable nylon castor              | Steel Board Plating Chassis Connection                     |                                    |                     |
| SM-5130CF | Seat Size: 430x400mm, Back size: 400x300mm | 440-580mm      | Alum. Alloy Die-casting R=300mm  | High strength durable nylon fixed feet          |  |                                    |                     |
| SM-5210C  | Seat Size: 430x400mm, Back size: 400x300mm | 440-600mm      | Chrome plated, R=260mm   | High strength durable nylon fixed feet          | Steel Pipe Plating Chassis Connection with dust-free cover |                                    |                     |
| SM-5360E  | Seat Size: 430x400mm, Back size: 400x300mm | 440-580mm      | Alum. Alloy Die-casting R=320mm  | Alum. Alloy Castor                              | Steel Board Plating Chassis Connection                     |                                    |                     |
| SM-5450C  | Seat Size: 430x400mm, Back size: 400x300mm | 420-570mm      | Alum. Alloy Die-casting R=240mm  | High strength durable nylon fixed feet          | Steel Pipe Plating Chassis Connection with dust-free cover |                                    |                     |
| SM-5261B  | Seat Size: 430x400mm, Back size: 400x300mm | 660-860mm      | Alum. Alloy Die-casting, R=320mm<br>Footrest Circle: Stainless steel Circle, plastic cross | High strength durable nylon double-color castor | Steel Pipe Plating Chassis Connection with dust-free cover |                                    |                     |
| SM-5361C  | Seat Size: 430x400mm, Back size: 400x300mm | 630-830mm      | Alum. Alloy Die-casting, R=320mm<br>Footrest Circle: Stainless steel Circle, plastic cross | High strength durable nylon fixed feet          | Steel Board Plating Chassis Connection                     |                                    |                     |





**SM-3861A ESD PU Foaming Chair**

Seat Size: 440x420mm, Back size: 380x320mm  
 Color: Black  
 Chassis: Steel Board Plating Chassis Connection  
 System resistance: 10E7-10E9 ohm  
 Lift Mode: High-class gas lift  
 Adjust. Height: 650-850mm  
 Five-star feet: Alum. Alloy Die-casting R=320mm  
 Footrest Circle: Stainless steel Circle, plastic cross  
 Chair castor: High strength durable nylon castor  
 With metal conductive chain

**ESD Chair Accessories System**



**Alum. Alloy  
conductive castor**



**Plastic conductive  
castor-black**



**Plastic conductive  
castor-white**



**Alum. Alloy  
conductive foot cup**



**Plastic conductive  
foot cup**



**Adjustable  
pneumatic rod**



**Footrest**



**One-time forming  
plated Five-star feet**



**Alum. Alloy  
conductive foot cup**



**Chrome plated  
with footrest circle**



## ESD Work Bench



| Model   | Product              | Size (mm)   |
|---------|----------------------|-------------|
| SM18106 | Antistatic Table Top | 1000×600×25 |
| SM18126 | Antistatic Table Top | 1200×600×25 |
| SM18156 | Antistatic Table Top | 1530×600×25 |
| SM18158 | Antistatic Table Top | 1530×750×25 |
| SM18159 | Antistatic Table Top | 1530×900×25 |
| SM18188 | Antistatic Table Top | 1830×750×25 |
| SM18189 | Antistatic Table Top | 1830×900×25 |
| SM28108 | Fire Board Table Top | 1000×750×50 |
| SM28158 | Fire Board Table Top | 1530×750×50 |
| SM28188 | Fire Board Table Top | 1830×750×50 |
| SM28208 | Fire Board Table Top | 2000×750×50 |



**Fixed ESD Table Bench**



**Adjustable ESD Table Bench**



**Cabinet ESD Table Bench**



**Heavy ESD Table Bench**



**Mobile ESD Table Bench**



**ESD Industrial Trolley**

# MOISTURE-PROOF CABINET

## Digital Dry Cabinet

| Model     | Standard Humidity    | Contour Size (W x H x D) mm | Interior Size (W x H x D) mm | Volume | High load Steel Shelf |
|-----------|----------------------|-----------------------------|------------------------------|--------|-----------------------|
| HDEN-157  | 25~61% Rh adjustable | 450x950x452                 | 448x869x425                  | 165L   | 3pcs                  |
| HDEN-290  | 25~60% Rh adjustable | 600x632x672                 | 598x524x645                  | 202L   | 2pcs                  |
| HDEN-315  | 25~59% Rh adjustable | 905x1045x452                | 903x869x425                  | 334L   | 3pcs                  |
| HDEN-490  | 25~58% Rh adjustable | 600x1274x672                | 598x1071x645                 | 413L   | 3pcs                  |
| HDEN-575  | 25~57% Rh adjustable | 905x1045x800                | 903x869x773                  | 607L   | 3pcs                  |
| HDEN-790  | 25~56% Rh adjustable | 600x1820x672                | 598x1618x645                 | 624L   | 5pcs                  |
| HDEN-1490 | 25~55% Rh adjustable | 1200x1820x672               | 1198x1618x645                | 1250L  | 5pcs                  |

Property: HDEN: 25~55% Rh

HDEN-A: 10-20% Rh (Auto)

HDEN-AL: 1-10% Rh (Auto)

Usage: for storing precision electronics components, wafer, microscope, large meter, PCBs, etc.



HDEN-157



HDEN-209



HDEN-315



HDEN-490



HDEN-575



HDEN-790



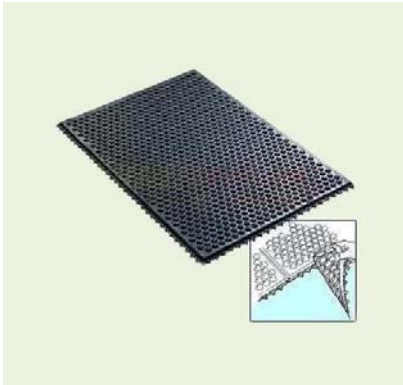
HDEN-1490-4



HDEN-1490-6

## FLOOR MAT, TABLE MAT

### Anti-fatigue Mat



#### SM-950 Anti-fatigue Mat

Pass the class 1000 cleanroom test, comply to Rohs Standard.

Good Natural Rubber, comfortable, durable anti-fatigue mat.

Size(mm): 610x450x15, Weight: 2kg

Surface resistance: RTT  $1 \times 10^3 - 10^5$  ohms.

Patented locked design, each piece mat can lock together or separate.

Patented ventilated design, not easy to be funky

Special Slip-proof design, not easy to slide.



#### SM-930 Anti-fatigue Mat

Comply to Rohs standard, rubber material

Size A(mm): 610x910x12.5 Weight: 3kg

Size B(mm): 610x450x12.5 Weight: 1.8kg

Surface resistance: RTT  $1 \times 10^8 - 10^9$  ohms.



#### SM-418S Anti-fatigue Mat

2 layers structure, surface is PVC, bottom layer is carbamic resin

Size(mm): 610x910x17, other size can be customized.

Surface resistance: RTT  $1 \times 10^8 - 10^9$  ohms

Fit for electronic components manufacturers and static sensitive area.



#### SM-418E Anti-fatigue Mat

3 layers structure, surface is pvc, middle layer is carbamic resin, bottom layer is conductive rubber.

Size(mm): 610x910x18, 610x450x18, other size can be customized.

Surface resistance: RTT  $1 \times 10^8 - 10^9$  ohms

Fit for electronic components manufacturers and static sensitive area.

# FLOOR MAT, TABLE MAT



## SM-418B Anti-fatigue Mat

3 layers structure, surface is pvc, middle layer is EPDM foam, bottom layer is conductive rubber.

Size(mm): 610x910x20, 610x450x20, other size can be customized.

Surface resistance: RTT  $1 \times 10^8 - 10^9$  ohms

Fit for electronic components manufacturers and static sensitive area.

| Model   | Size(mm)                     | Material  | Surface Resistance | Ground Resistance    | Anti-fatigue Effect | Note            |
|---------|------------------------------|---|--------------------|----------------------|---------------------|-----------------|
| SM-950  | 610x460x15                   | Good Natural Rubber                                 | $<10^7$ ohm        | $<10^7$ ohm          | Best                |                 |
| SM-930  | 610x910x12.5<br>610x450x12.5 | Rubber Material                                     | $10^8 - 10^9$ ohm  | $10^8 - 10^9$ ohm    | Good                | Low cost design |
| SM-418S | 610x910x17                   | 2 layers:<br>PVC+ Carbamic resin                    | $10^8 - 10^9$ ohm  | $10^9 - 10^{10}$ ohm | Better              |                 |
| SM-418E | 610x910x18<br>610x450x18     | 3 layers: PVC + Carbamic resin + Conductive rubber. | $10^8 - 10^9$ ohm  | $10^9 - 10^{10}$ ohm | Better              |                 |
| SM-418B | 610x910x20                   | 3 layers: PVC + EPDM + Conductive rubber.           | $10^8 - 10^9$ ohm  | $10^9 - 10^{10}$ ohm | Better              | Low cost design |

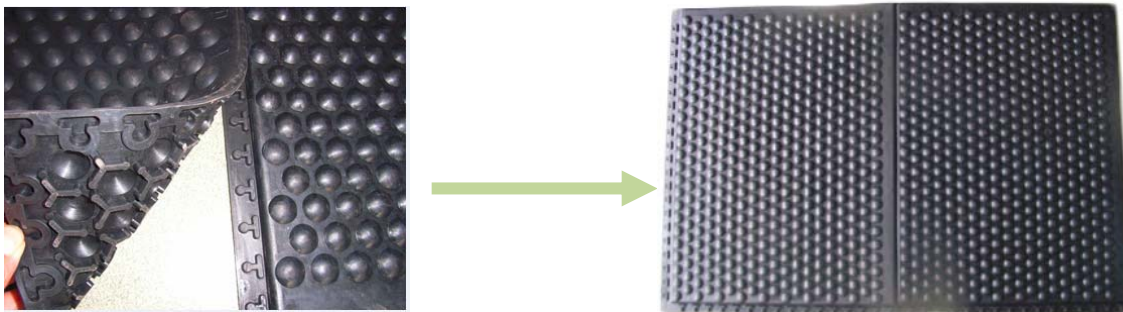
Notes:

Size can be customized.

Biggest size: SM418S: 1200mmx10000mm

SM418E & SM418B: 1200mmx1200mm

## SM-950 locked picture



# FLOOR MAT, TABLE MAT



## LN95 Sticky Mat

Film Material: Low density PE  
Bond Material: water-soluble acrylic acid  
Layer thickness: 50µm/40µm  
Tensile Strength: >1.2kg/cm<sup>2</sup>  
Layer qty: 30layers/set  
Stickiness: Low / Midd. / High  
Color: Blue/white  
Package: 30layers/set, 10sets/box, 5box/ctn  
Size: 18"x36", 18"x45", 24"x36", 26"x45"



## SM-96 Sticky Pen

Excellent dust sticky performance  
Sticky Silicon Pen  
Size: 5mm, 8mm



## SM-97 ESD Table Mat

Thickness: 2mm, 3mm  
Width: 0.6m, 0.9m, 1m, 1.2m  
Length: 10m  
Color: blue / green / grey  
Upper layer resistance: 10E8-10E10 ohm  
Under layer resistance: 10E4-10E6 ohm  
High temperature endurable type available.

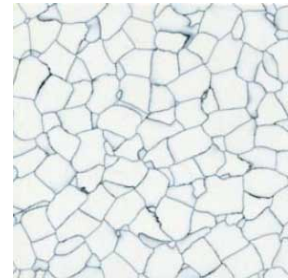
# ESD PVC FLOOR

## ESD PVC Floor

- 1) Size: 600mm×600mm, 610mm×610mm, 900mm×900mm
- 2) Thickness: 2.0mm/2.5mm/3.0mm
- 3) System Resistance: 2.5×10E4-10E6 ohm (Conductive)  
10E6-10E8 ohm (Anti-static)

Note: Color is fixed according to samples.

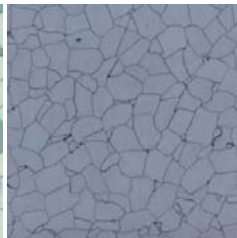
The main material is PVC resin, which is made with special process. The conductive or anti-static network between PVC particles makes PVC floor anti-static or conductive permanently. The surface seems like marble, which has very good decoration effects. It is widely used for telecom, electronic industries, cell-type machine room, PC room and cleanroom workshops, etc, which have purification and anti-static request.



**SM-01**



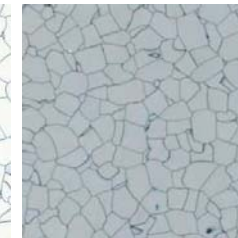
**SM-02**



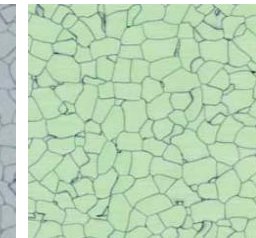
**SM-03**



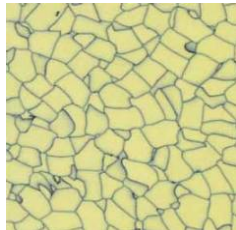
**SM-04**



**SM-06**



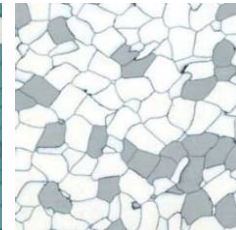
**SM-901**



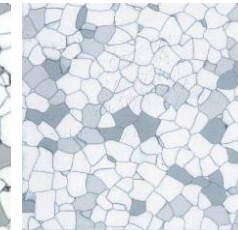
**SM-903**



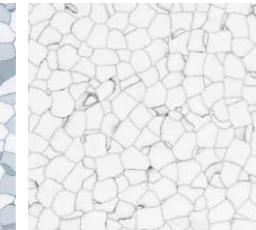
**SM-906**



**SM-909**



**SM-1101**



**SM-1103**



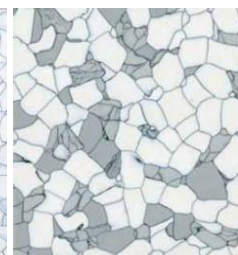
**SM-1105**



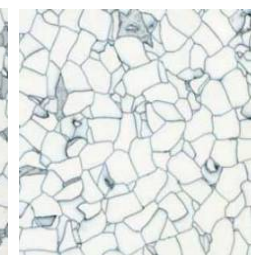
**SM-1106**



**SM-1108**



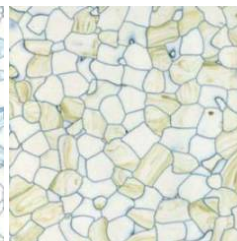
**SM-9021**



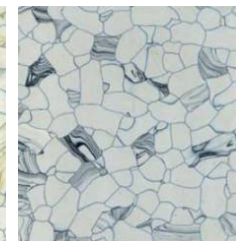
**SM-9022**



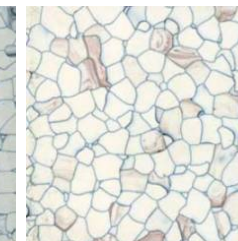
**SM-9023**



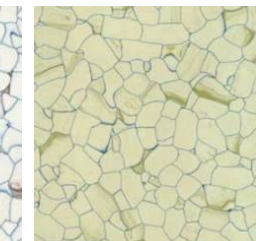
**SM-9025**



**SM-9026**



**SM-9027**



**SM-9028**

# CLEANROOM PRODUCT

## ESD Clothes

### SM-101 ESD Garment

Material: 100% polyester with conductive fiber

Size: S, M, L, XL, 2XL



| Size | Length | Circum. (Chest) | Sleeve | Shoulder Width | Suitable Height |
|------|--------|-----------------|--------|----------------|-----------------|
| S    | 87     | 109             | 54     | 44             | 156-162         |
| M    | 90     | 113             | 57     | 46             | 162-168         |
| L    | 93     | 117             | 60     | 48             | 168-174         |
| XL   | 96     | 121             | 63     | 50             | 174-180         |
| XXL  | 99     | 125             | 66     | 52             | 180-186         |

### SM-102 ESD TC Garment

Material: 65% polyester, 35% cotton with conductive fiber

Size: S, M, L, XL, 2XL



| Size | Length | Circum. (Chest) | Sleeve | Shoulder Width | Suitable Height |
|------|--------|-----------------|--------|----------------|-----------------|
| S    | 87     | 109             | 54     | 44             | 156-162         |
| M    | 90     | 113             | 57     | 46             | 162-168         |
| L    | 93     | 117             | 60     | 48             | 168-174         |
| XL   | 96     | 121             | 63     | 50             | 174-180         |
| XXL  | 99     | 125             | 66     | 52             | 180-186         |

### SM-103 ESD Stand Collar Smock

Material: 100% polyester with conductive fiber

Size: S, M, L, XL, 2XL



| Size | Length | Circum (Chest) | Sleeve | Shoulder Width | Trousers Length | Suitable Height |
|------|--------|----------------|--------|----------------|-----------------|-----------------|
| S    | 63     | 102            | 54     | 44             | 95              | 156-162         |
| M    | 66     | 106            | 57     | 46             | 98              | 162-168         |
| L    | 69     | 110            | 60     | 48             | 101             | 168-174         |
| XL   | 72     | 114            | 63     | 50             | 104             | 174-180         |
| XXL  | 74     | 118            | 66     | 52             | 106             | 180-186         |

# CLEANROOM PRODUCT

## SM-104 ESD Working Uniform

Material: 65% polyester, 35% cotton with conductive fiber

Size: S, M, L, XL, 2XL



| Size | Length | Circum (Chest) | Sleeve | Shoulder Width | Trousers Length | Suitable Height |
|------|--------|----------------|--------|----------------|-----------------|-----------------|
| S    | 63     | 102            | 54     | 44             | 95              | 156-162         |
| M    | 66     | 106            | 57     | 46             | 98              | 162-168         |
| L    | 69     | 110            | 60     | 48             | 101             | 168-174         |
| XL   | 72     | 114            | 63     | 50             | 104             | 174-180         |
| XXL  | 74     | 118            | 66     | 52             | 106             | 180-186         |

## SM-105 ESD Overcoat

Composition: 99% polyester and 1% conductive fiber

Weave: 1/2 twill, 3/2 twill

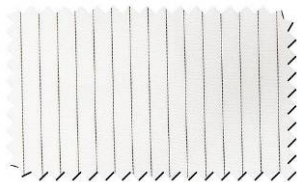
Yarn type: 100D, 75D

0.5 strip, 0.5 grip and 0.25 grip

White, blue and pink colors are available



| Size | Length | Circum. (Chest) | Sleeve | Shoulder Width | Suitable Height |
|------|--------|-----------------|--------|----------------|-----------------|
| S    | 147    | 110             | 96     | 78             | 156-162         |
| M    | 151    | 114             | 100    | 80             | 162-168         |
| L    | 155    | 118             | 104    | 82             | 168-174         |
| XL   | 160    | 122             | 108    | 84             | 174-180         |
| XXL  | 165    | 126             | 112    | 86             | 180-186         |



**TC fabric-white**

Material: Made of 65% polyester and 35% cotton, with conductive fiber by 1cm distance.



**Anti-static fabric**

Material: 100% polyester with conductive fiber Type: Grid 5mm and 2.5mm type Strip 5mm and 2.5mm type Surface resistance: 10E4-10E9 ohm



ESD Cap



LN-301



LN-302



LN-303



LN-304



LN-305



LN-306



LN-307



LN-308



LN-309



LN-310



LN-311



LN-312



LN-313



LN-314



LN-315



LN-316

## CLEANROOM PRODUCT

---

### ESD Shoes

Wearing antistatic shoes is the most efficient and safest method to discharge the body static, and it can also prevent dust generation.

Our ESD shoes are made of PVC,PU,SPU and Cloth. They are comfortable, light, anti-slip, antistatic.

Size: 22.5cm-28cm



## CLEANROOM PRODUCT

---

### ESD Gloves



**SM-8001 ESD Glove**



**SM-8002 ESD Lint free dotted Glove**



**SM-8003 Carbon glove**



**SM-8003F Carbon top fit PU glove**



**SM-8003P Carbon Palm fit PU glove**



**SM-8004 Copper Fiber Glove**



**SM-8004F Copper top fit PU glove**



**SM-8004P Copper top fit PU glove**



**SM-8005 Nylon glove**



**SM-8005F Nylon top fit PU glove**



**SM-8005P Nylon palm fit PU glove**



**SM-8006 Foam nitrile coating**

# CLEANROOM PRODUCT

---



**SM-8007 Clean Glove**



**SM-8008 Latex Glove**



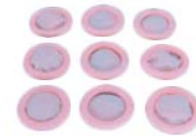
**SM-8009 Clean PVC Glove**



**SM-8010 Nitrile Glove**



**SM-8101 Finger cot**



**SM-8102 Finger cot**



**SM-8103 Finger cot**



**SM-8104 Finger cot**



**SM-8105 Finger cot**



**ESD Shoe Cover**



**Face Mask**



**ESD Alcohol Bottle**



**Clean Room Wiper**



**M-1000  
Tape Dispenser**



**Vacuum Cleaner**

ESD Wrist Strap



LN1102  
Wired Wrist Strap



LN1107  
High Quality Wrist Strap



LN1109  
Top Quality Wrist Strap



LN1203  
Velcro wrist strap



LN1403  
Metal Wrist Strap



LN1404  
Adjustable Metal Wrist Strap



LN1501  
Wireless Wrist Strap



SM-1601  
Dual Wire Metal Wrist Strap



LN1602  
Dual Wire Fabric Wrist Strap



SM-1701  
ESD Silica Gel Wrist Strap



LN1801  
Floor Mat Grounding Cord



LN1802  
Floor Mat Grounding Lead Kit



LN1803  
Double head Grounding Cord



LN1804  
Dual Bench Grounding Socket



LN1901  
Heel Strap



LN1902  
Disposable Heel Grander

## ESD TOOLS

### ESD Brush

Made of electric-plastic in various shapes and size, ESD Brush are used to clean various components without hurt or damage to them.

Surface Resistance:  $10^5 - 10^9 \Omega$ .



ESD Tweezers

|   |   |   |  |
|---|---|---|--|
| <br><b>00-SA</b>     | <br><b>2A-SA</b>     | <br><b>2-SA</b>     | <br><b>3C-SA</b>    |
| <br><b>3-SA</b>      | <br><b>5A-SA</b>     | <br><b>5B-SA</b>    | <br><b>7-SA</b>     |
| <br><b>34A-SA</b>   | <br><b>90A-SA</b>   | <br><b>AA-SA</b>   | <br><b>ESD-7A</b>  |
| <br><b>ESD-10</b>  | <br><b>ESD-13</b>  | <br><b>ESD-15</b> | <br><b>ESD-17</b> |
| <br><b>ESD-249</b> | <br><b>ESD-259</b> | <br><b>ESD-00</b> | <br><b>SS-SA</b>  |
| <br><b>ST-10</b>   | <br><b>ST-11</b>   | <br><b>ST-12</b>  | <br><b>ST-13</b>  |
| <br><b>ST-14</b>   | <br><b>ST-15</b>   | <br><b>ST-16</b>  | <br><b>ST-17</b>  |

## ESD TOOLS

### Bench top Ionizing Air Blower SM-S001



|                       |                               |
|-----------------------|-------------------------------|
| Operating Voltage     | 110v/60Hz or 220V/50Hz        |
| Current Consumption   | 0.25A or 0.12A                |
| Operating Temperature | 0-50°C                        |
| Air Coverage          | 40cm×60cm                     |
| Size                  | 90mm(L) × 170mm(W) × 260mm(H) |
| Weight                | 3kg                           |
| Air Volume            | 45~110CFM                     |
| Ion Balance           | 0V±10V                        |

### Horizontal Ionizing Air Blower SM-S020



|                       |                                |
|-----------------------|--------------------------------|
| Operating Voltage     | 110V/60Hz or 220V/50Hz         |
| Current Consumption   | 3.0A or 1.5A                   |
| Operating Temperature | 0-50°C                         |
| Air Coverage          | 60cm×120cm                     |
| Size                  | 450mm(L) × 220mm(W) × 190mm(H) |
| Weight                | 8kg                            |
| Air Volume            | 70~120CFM                      |
| Ion Balance           | 0V±10V                         |

### Overhead Ionizing Air Blowers



**SM-S002**



**SM-S003**



**SM-S1104**

| Model                 | SM-S002                        | SM-S003                         | SM-S1104                        |
|-----------------------|--------------------------------|---------------------------------|---------------------------------|
| Operating Voltage     | 110V/60Hz or 220V/50Hz         | 110V/60Hz or 220V/50Hz          | 110V/60Hz or 220V/50Hz          |
| Current Consumption   | 0.9A or 0.4A                   | 1.25A or 0.62A                  | 1.3A or 0.65A                   |
| Operating Temperature | 0-50°C                         | 0-50°C                          | 0-50°C                          |
| Air Coverage          | 40cm×90cm                      | 40cm×120cm                      | 40cm×120cm                      |
| Size                  | 600mm(L) × 184mm(W) × 110mm(H) | 1100mm(L) × 184mm(W) × 110mm(H) | 1100mm(L) × 184mm(W) × 110mm(H) |
| Weight                | 7.5kg                          | 11.7kg                          | 12kg                            |
| Air Volume            | 80~220CFM                      | 120~330CFM                      | 160~330CFM                      |
| Ion Balance           | 0V±10V                         | 0V±10V                          | 0V±10V                          |

### Ionizing Air Gun SM-S004



|                        |                |
|------------------------|----------------|
| Operating Voltage      | 4.6KV(SM-S007) |
| Current Consumption    | 200uA          |
| Operating Temperature  | 0-50°C         |
| Weight                 | 0.5kg          |
| HV cable length        | 3meters        |
| Air velocity           | 40~70psi       |
| Operating air velocity | > 10m/sec      |



### High Voltage Power Supply SM-S007

|                   |                        |
|-------------------|------------------------|
| Operating Voltage | 110V/60Hz or 220V/50Hz |
| Output Voltage    | 4.6KV×2                |
| Output Current    | Max.4.5mA              |

\* Match SM-S007 High Voltage Power Supply



# ESD TOOLS

## Ionizing Air Bar SM-S040



\* March SM-S009 High Voltage Power Supply

|                       |                |
|-----------------------|----------------|
| Operating Voltage     | 7.0KV(SM-S009) |
| Current Consumption   | 0.4uA          |
| Operating Temperature | 22-25°C        |
| HV cable length       | 3Meters        |
| Max. length           | 4Meters        |
| Relative Humidity     | ≤60%RH         |



## High Voltage Power Supply SM-S009

|                   |                        |
|-------------------|------------------------|
| Operating Voltage | 110V/60Hz or 220V/50Hz |
| Output Voltage    | 7.0KV×2                |
| Output Current    | Max.4.5mA              |

## Ionizing Air Snake SM-S080A



\* March SM-S007 High Voltage Power Supply

|                        |  |
|------------------------|--|
| Operating Voltage      | 4.6KV(SM-S007)   |
| Current Consumption    | 350uA  |
| Operating Temperature  | 0-50°C   |
| Weight                 | 1.0kg  |
| Length of Hose         | 33cm   |
| Air velocity           | 5~70psi  |
| Air Flow               | 0.8SCFM at 10PSI<br>5.5SCFM at 50PSI<br>11.5SCFM at 100PSI |
| HV cable length        | 2meters  |
| Operating air velocity | 10m/sec  |

## Wrist Strap Tester SM- S035



|                       |                               |
|-----------------------|-------------------------------|
| Operating Temperature | 0°C-31°C                      |
| Relative Humidity     | 0%-90%RH                      |
| Size                  | 70mm(L)×256mm<br>(W)×100mm(H) |
| Weight                | 185g                          |

## Surface Resistance Tester SM-S030



|                       |                          |
|-----------------------|--------------------------|
| Operating Voltage     | 9V DC                    |
| Size                  | 137mm(L)×76mm(W)×30mm(H) |
| Work Time             | 40 Hours                 |
| Weight                | 120g                     |
| Operating Temperature | 0-50°C                   |
| Relative Humidity     | 0%-90%RH                 |

## Smoke Absorber SM-493



|             |                              |
|-------------|------------------------------|
| Power       | 14W(60Hz) 16W(50Hz)          |
|             | 0.93-1.07m <sup>3</sup> /min |
| Size        | 167(L)×101(W)×182 (H)mm      |
| Weight      | About 1.5kgs                 |
| Accessories | Filter(3pcs)                 |

## Wrist Strap/footwear Tester SM-S031



|                       |                               |
|-----------------------|-------------------------------|
| Operating Temperature | 0-31°C                        |
| Humidity              | 0%-90%RH                      |
| Size                  | Tester: 156(L)×97(W)×40(H)mm  |
|                       | Shelf: 400(L)×250(W)×800(H)mm |
|                       | Pedal: 400(L)×450(W) ×20(H)mm |
| Weight                | 6.5kg                         |
| Height adjustment     | 900mm-1470mm                  |

**Electro Static Field Meter**



**SIMCO FMX-003**



**Quick 431**

|                                |  |  |
|--------------------------------|--|--|
| Model                          | SIMCO FMX-003                                  | Quick 431                                      |
| Power Supply                   | 9V Battery                                     | 9V Battery                                     |
| Display Mode                   | LCD display and with range synchronous display | LCD display and with range synchronous display |
| Test Range                     | 0~±20.0KV                                      | 0~±22.0KV                                      |
| Test Range of Ion balance      | 0~±200V  | 0~±220V  |
| Standard Distance(Static Test) | 25mm(±1mm)                                     | 25mm(±0.5mm)                                   |
| Test Accuracy                  | ±(10%)   | ±(10%+1)                                       |
| Standby Current                | <3uA   | <3uA   |
| Working Environment            | 10°C-40°C Relative Humidity 0-60%              | 10°C-50°C Relative Humidity 0-80%              |
| Working Current                | <15mA  | <15mA  |
| Casing                         | ESD Design                                     | ESD Design                                     |
| Volume                         | 115×65×25mm(L×W×H)                             | 125×70×25mm(L×W×H)                             |
| Weight                         | Approx.130g(Including battery)                 | Approx.200g(Including battery)                 |

**ESD Vacuum**



**HANDI-VAC HV-X ESD Vacuum Pen**



**BULB-VAC ESD Vacuum Pen**



**SM-8920 ESD Vacuum Pen**

**Desk/Bench Top Magnifying Lamp**



**SM-208**



**SM-228A**



**SM-228B**



**SM-228**

|                   |                                 |                                  |                                 |  |
|-------------------|---------------------------------|----------------------------------|---------------------------------|--|
| Model             | SM-208 Desk/ Bench top          | SM-228A Desk Magnifying Lamp     | SM-228B Desk Magnifying Lamp    | SM-228 Desk/ Bench top                 |
| Specifications    | Magnifying Lamp 208             | 228A                             | 228B                            | Magnifying Lamp 228                    |
| Supply Voltage    | 220V                            | 110V/220V                        | 110V/220V                       | 110V/220V                              |
| LENS              | Diameter 90MM                   | Diameter 125MM                   | Diameter 125MM                  | Diameter 125MM                         |
| Magnification     | x3,x5                           | x3,x5,x8                         | x3,x5,x8                        | x3,x5,x8                               |
| Adjustable Extent | 450mm                           | 500mm                            | 700mm                           | 1000mm                                 |
| Photo chromic     | Three Primary Colors            | Daylight Color                   | Daylight Color                  | Daylight Color                         |
| Characteristics   | Desktop, Folding Supporting-arm | Desktop, Straight Supporting arm | Desktop, Folding Supporting-arm | Table Clamping, Folding Supporting arm |